

Community-driven research on *Helicobacter pylori* infection in a Canadian Arctic hamlet: The Old Crow *H. pylori* Project

Laura Aplin, BSc.

Field Work Coordinator, CANHelp Working Group

Northern Research Day

March 31st, 2011

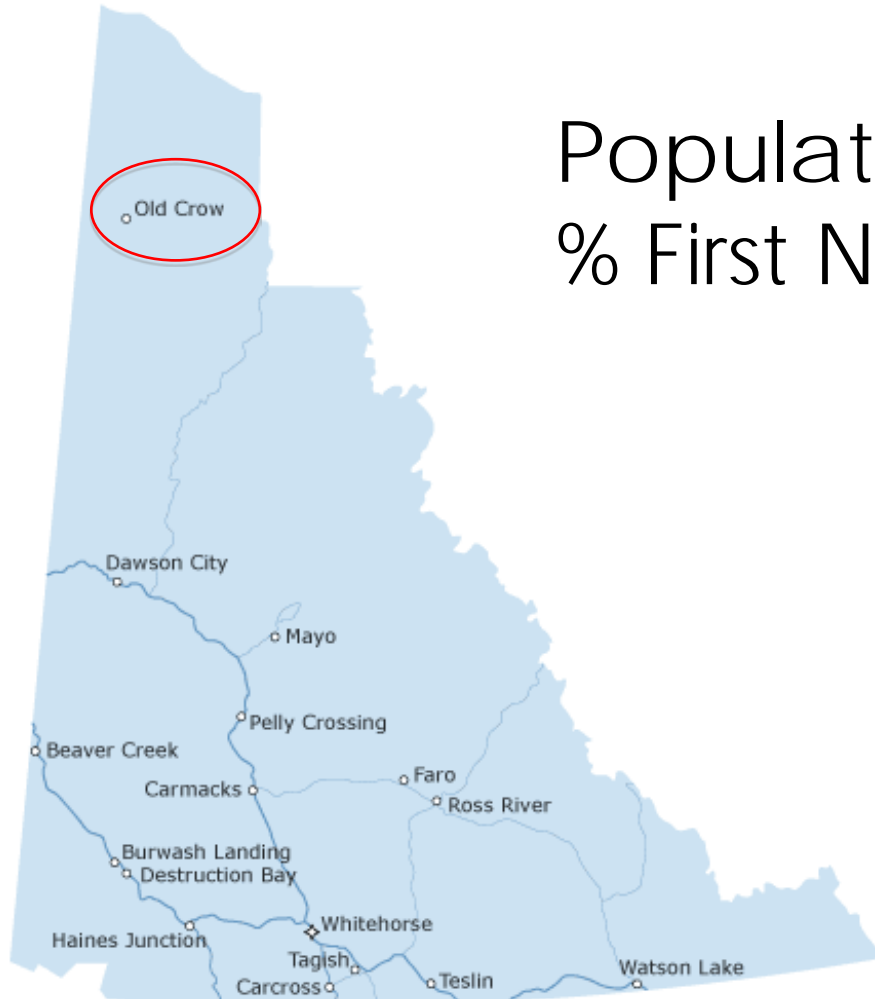


Outline

- Background
- Goals
- Components
- Results
- Coming up



Background



Population ~250
% First Nations ~90



Background

Timeline

Date	Event
July 2008	Presentation given at Biennial Gwitchin Gathering in Old Crow at the request of the local MLA
August 2008	Resolution passed at Vuntun Gwitchin General Assembly by consensus to bring <i>H. pylori</i> research to Old Crow
August 2009	Presentation given at VGFN GA to update community
September 2009	Local staff hired to update community & collect questions
May & August 2010	Planning workshops held with local committee
September 2010	Presentation by local committee at VGFN GA
November 2010 to February 2011	Project launch & start of field work





Goals

- Address community concerns
- Better understand impact of *H. pylori*
- Reduce health risks from *H. pylori*
- Recommend better approaches to health care providers and officials



Components

- Informed consent
- Community surveys
- Testing for *H. pylori*
- Treatment
- Knowledge exchange
- Policy development



Components

- Informed consent
- Community surveys
- Testing for *H. pylori*
- Treatment
- Knowledge exchange
- Policy development



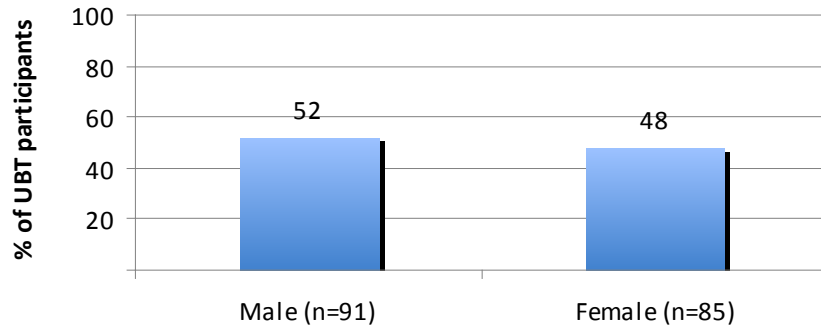
Results

- Enrolled: 177 (~70%)
- Tested for *H. pylori*: 176
- Completed surveys: 138

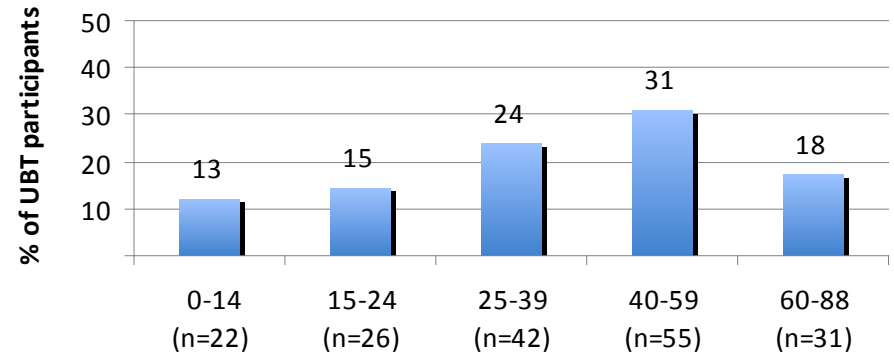


Results

Sex



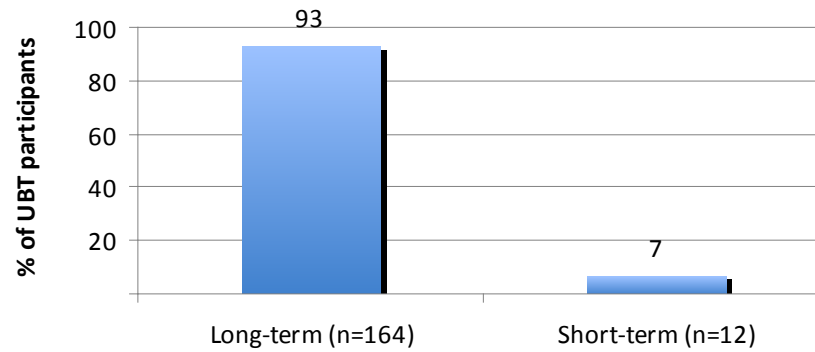
Age





Results

Residents





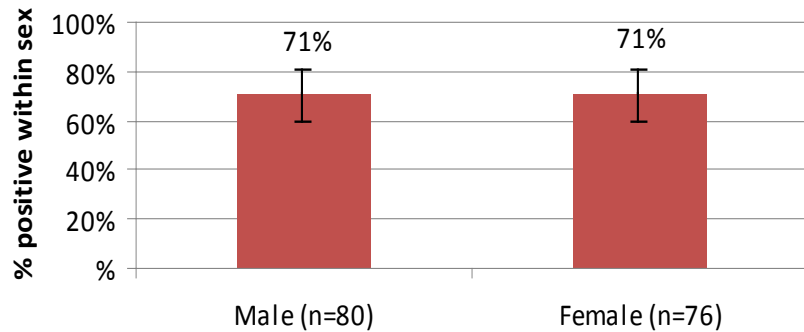
Results

- Tested for *H. pylori*: 176
- Result positive or negative: 156
- # positive: 111
- % positive: 71

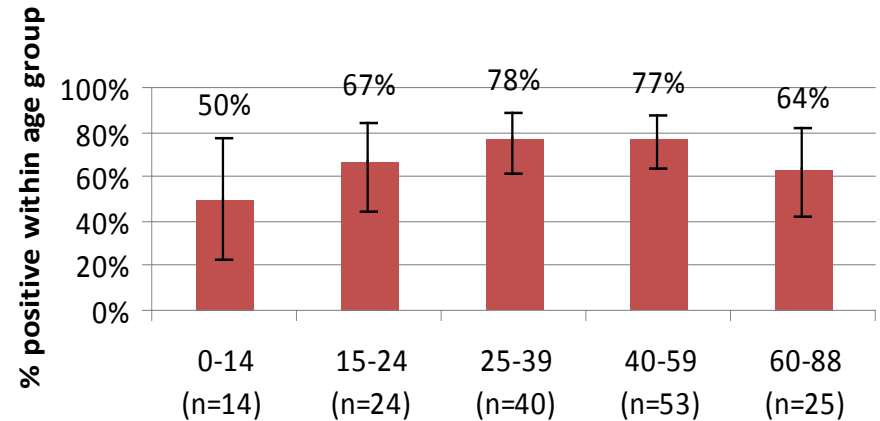


Results

Sex (UBT positive)



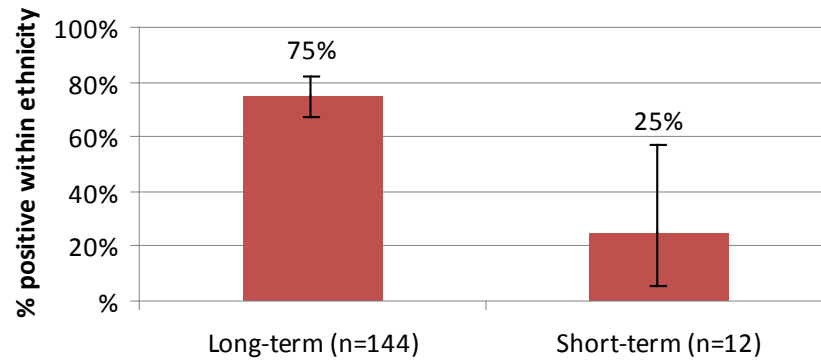
Age (UBT positive)





Results

Residents (UBT positive)





Coming up

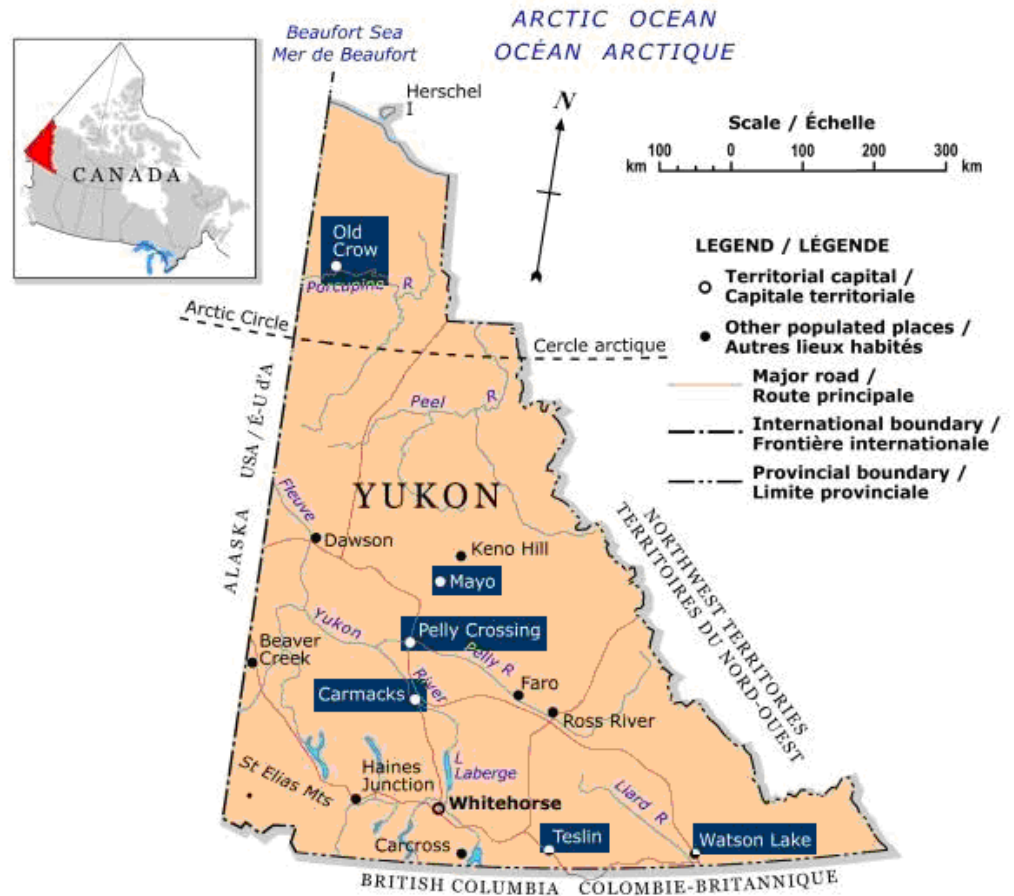
April/May

- Community update & feast
- Start planning treatment phase



Coming up

Expanding to 6 more Yukon communities





Acknowledgements

- CANHelp Working Group
- Dr. Karen Goodman
 - Janis Geary
 - Hsiu Ju
 - Amy Colquhoun
 - Ashley Wynne
 - Megan Lefebvre
- Old Crow *H. pylori* Project Planning Committee



Acknowledgements



- Alberta Heritage Foundation for Medical Research
- Canadian Institutes of Health Research (CIHR)
 - Institute of Aboriginal People's Health
 - Network Environments for Aboriginal Health Research (NEAHR)
 - Anisnabe Kekendazone, Ottawa
 - Nasivvik, Universite Laval
 - w/ Canadian Association for Gastroenterology & Industry Partners
- ArcticNet National Centre of Excellence
- Social Sciences and Humanities Research Council of Canada
- Indian and Northern Affairs Canada
- Canadian Circumpolar Institute
- Public Health Agency of Canada





Thank you! Questions?